

CD30

CONTACT INFORMATION:	Monoclonal Antibodies Unit. Centro Nacional de Investigaciones Oncológicas
STATUS:	Validated
TYPE:	mouse anti human
CLONE NAME:	CON6D
PROTEIN:	Tumor necrosis factor receptor superfamily member 8, Lymphocyte activation antigen CD30
PROTEIN WEB:	http://www.ncbi.nlm.nih.gov/protein/P28908.1
ANTIGEN USED:	L428 Hodgkin's lymphoma cell line
FUSION PARTNER:	NS1/Ag4-1 (NS1) cells
ISOTYPE:	IgG2a
SPECIES REACTIVITY:	human
PREPARATION AND STORAGE:	Aliquot and store at 4C. Do not freeze
COMMERCIALIZED BY:	Pierce Antibodies, Abcam and Santa Cruz

REFERENCES

Lau SK1, Thomas P, Weiss LM. Immunohistochemical evaluation of CON6D/B5: a new CD30 monoclonal antibody. Appl Immunohistochem Mol Morphol. 2010 May;18(3):273-7

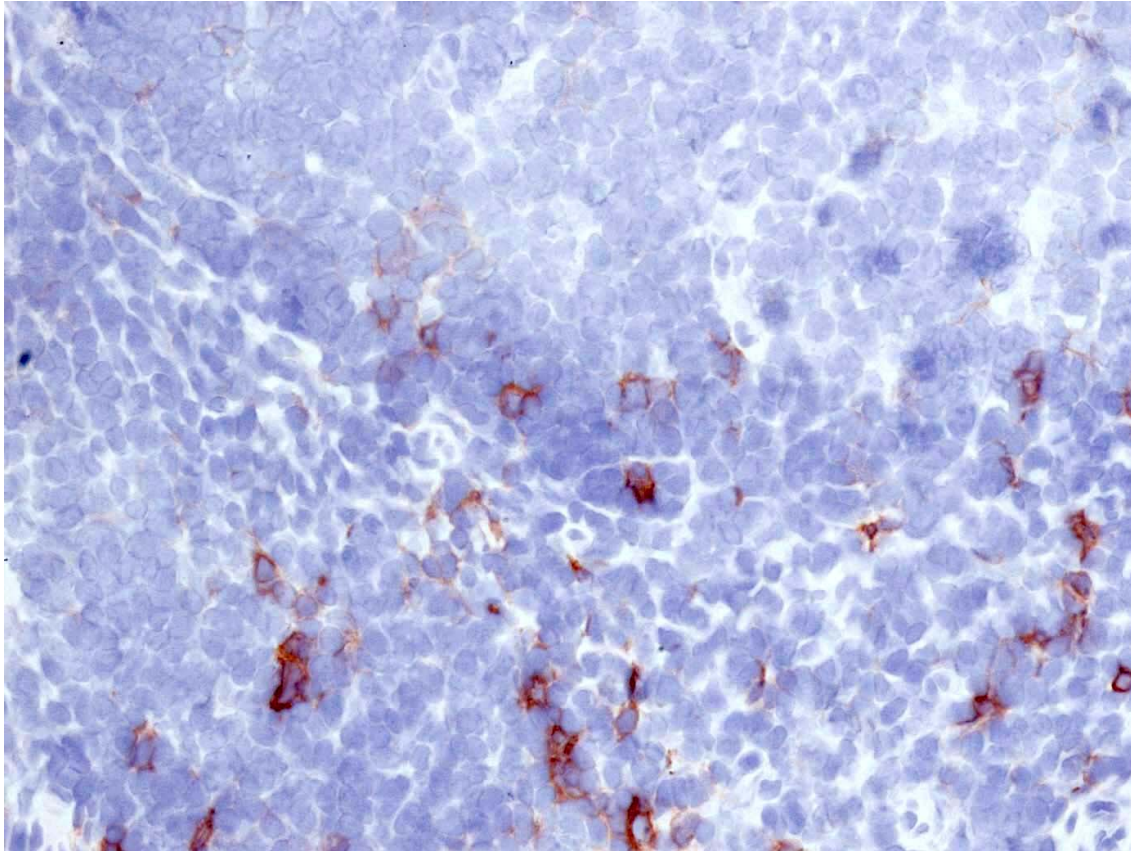
Nam-Cha SH, Montes-Moreno S, Salcedo MT, Sanjuan J, Garcia JF and Piris MA. Lymphocyte-rich classical Hodgkin's lymphoma: distinctive tumor and microenvironment markers. Modern Pathology (2009) 22, 1006–1015.

APPLICATIONS

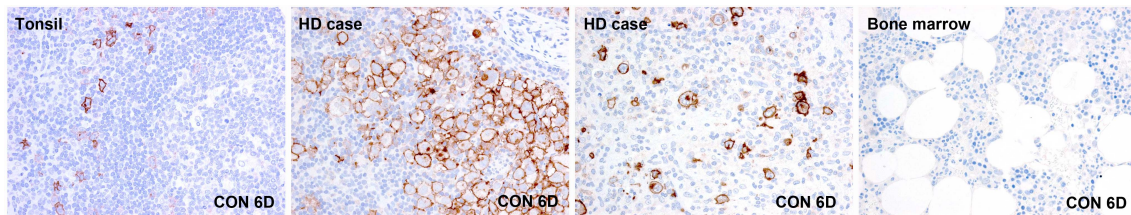
IHC Techniques	Clone	Dilution	Antibody concentration	Antigen retrieval method	Visualization kit	Positive control	Negative control	Protein localization	Positivity in other species
Frozen tissue and cytopspins									

Monoclonal Antibodies Catalogue

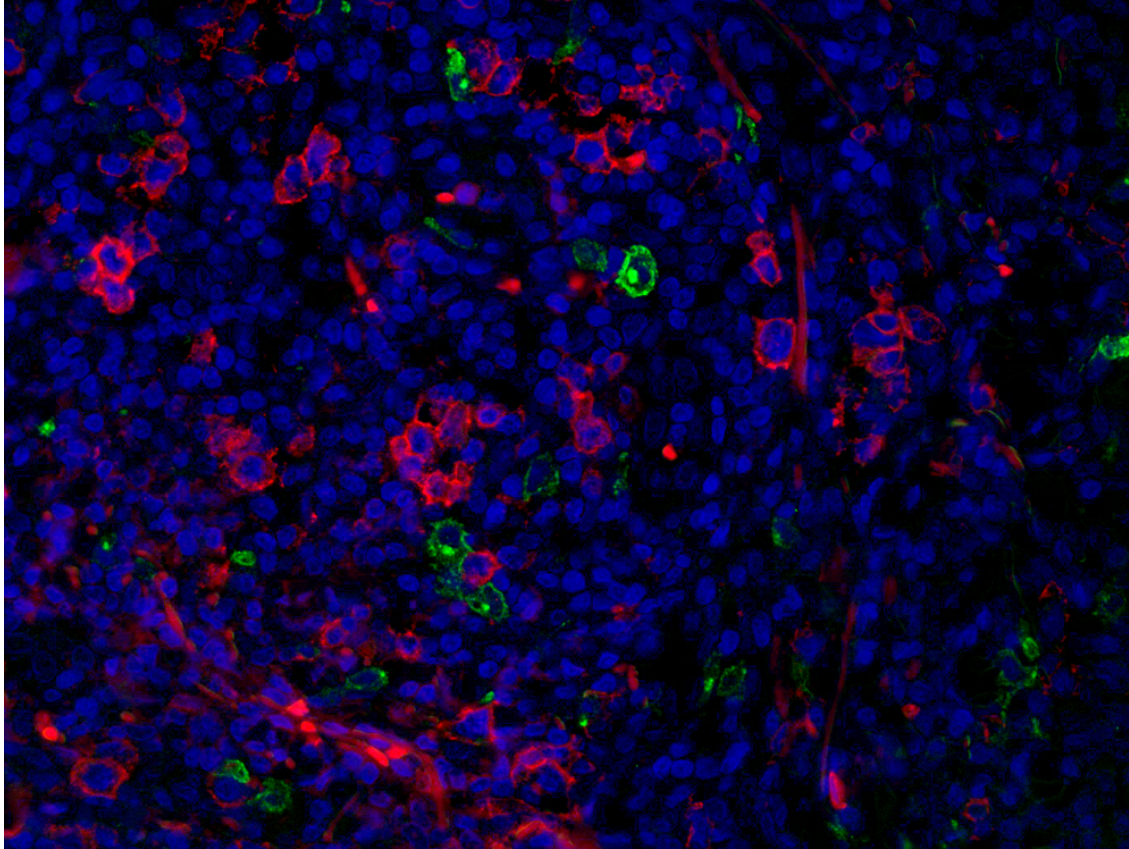
Recommended	CON6 D	Neat supernat ant				Tonsil			
Paraffin tissue									
Recommended	CON6 D	Neat supernat ant		Citrate	Leica	Tonsil			
Immunofluorescence									
Recommended	CON6 D	Neat supernat ant				Tonsil			



CON6D mAb in human frozen tonsil



CON6D mAb in human paraffin tissues



CD30 detection in human tonsil by immunofluorescence

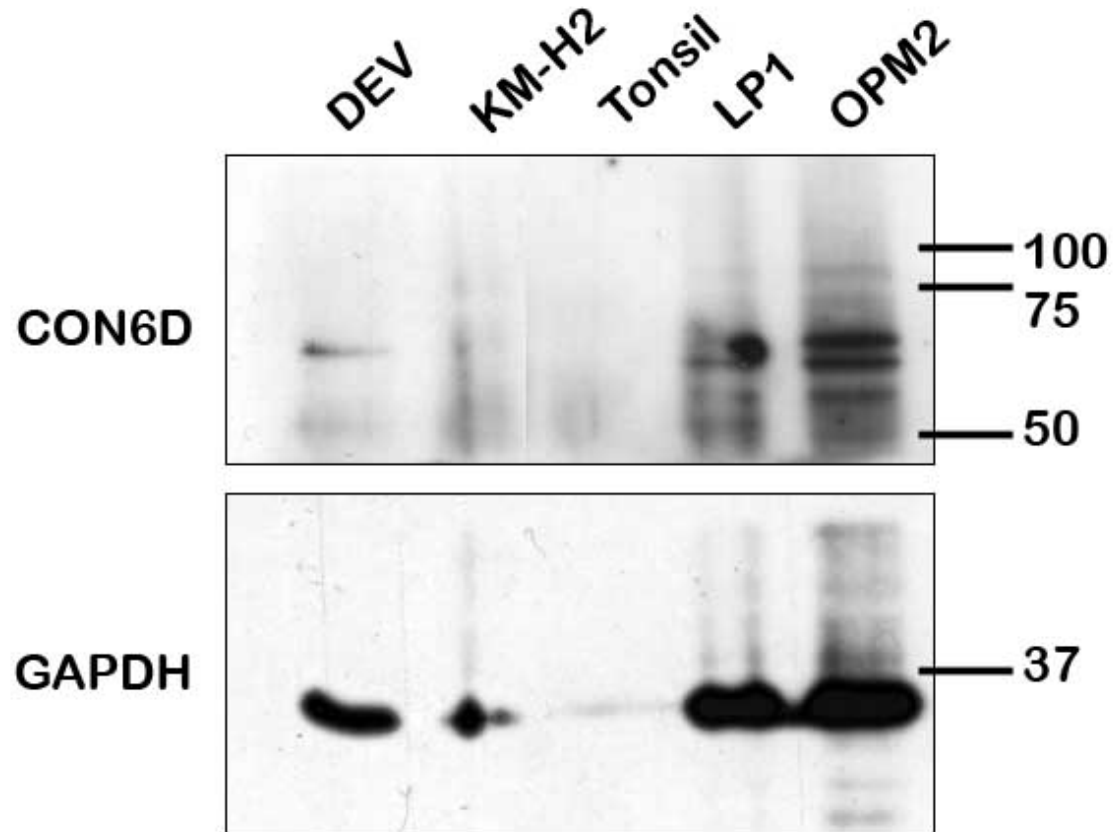
CD30 (CON6D) in green, PD1 (NAT105C) in red and DAPI in blue.

WB Techniques	Clone	Dilution	Antibody concentration	Positive control	Negative control	Expected MW	Observed Mw	Positivity in other species
---------------	-------	----------	------------------------	------------------	------------------	-------------	-------------	-----------------------------

Western Blotting

Recommended	CON6D	Neat supernatant		OPM2 cell line		62kDa	62kDa	
-------------	-------	------------------	--	----------------	--	-------	-------	--

Immunoprecipitation



CON6D mAb in different human cell lines

Lane 1 DEV cell line (100ug) (+)

Lane 2 KM-H2 cell line (100ug) (-)

Lane 3 Human tonsil (100ug) (-)

Lane 4 LP1 cell line (100ug) (+)

Lane 5 OPM2 cell line (100ug) (+)