

## BCL6

<b>CONTACT INFORMATION:</b>	Monoclonal Antibodies Unit. Centro Nacional de Investigaciones Oncológicas
<b>STATUS:</b>	Validated
<b>TYPE:</b>	mouse anti human
<b>CLONE NAME:</b>	GI191E
<b>PROTEIN:</b>	human full length BCL6
<b>PROTEIN WEB:</b>	<a href="http://www.hprd.org/summary?hprd_id=00180&amp;isoform_id=00180_3&amp;isoform_name=Isoform_1">http://www.hprd.org/summary?hprd_id=00180&amp;isoform_id=00180_3&amp;isoform_name=Isoform_1</a>
<b>ANTIGEN USED:</b>	pcDNA3-BCL6
<b>FUSION PARTNER:</b>	NS1/Ag4-1 (NS1) cells
<b>ISOTYPE:</b>	IgG1
<b>SPECIES REACTIVITY:</b>	human and mouse
<b>PREPARATION AND STORAGE:</b>	Aliquot and store at 4C. Do not freeze
<b>APP RECOMMENDED:</b>	WB, IHC-frozen, IHC-paraffin
<b>APP NO TESTED:</b>	IP, IF, Flow Cytometry

### DESCRIPTION

---

BCL-6 is a transcriptional regulator gene which codes for a 706-amino-acid nuclear zinc finger protein. Antibodies to this protein stain the germinal centre cells in lymphoid follicles, the follicular cells and interfollicular cells in Follicular Lymphoma, Diffuse Large B-Cell Lymphomas, and Burkitt's lymphoma, and the majority of the Reed-Sternberg cells in Nodular Lymphocyte Predominant Hodgkin's Disease. In contrast, anti-BCL-6 rarely stains Mantle Cell Lymphoma and MALT Lymphoma. BCL-6 expression is seen in approximately 45% of CD30+ Anaplastic Large Cell Lymphoma but is consistently absent in other peripheral T-cell lymphomas.

### PUBLICATION DESCRIBING ANTIBODY CHARACTERIZATION/VALIDATION

---

García JF, García JF, Maestre L, Lucas E, Sánchez-Verde L, Romero-Chala S, Piris MA, Roncador G. Genetic Immunization: a New Monoclonal Antibody for the Detection of BCL-6 Protein in Paraffin Sections. *J Histochem Cytochem.* 2006 54(1):31-8.

<http://www.ncbi.nlm.nih.gov/pubmed/16046671>

## REFERENCES

Guggisberg K and Jordan R. Mantle cell lymphoma of the oral cavity: case series and comprehensive review of the literature. Oral and maxillofacial pathology. 2010 109 (1): 98-104.

Kanellis G, Roncador G, Arribas A, Mollejo M, Montes-Moreno S, Maestre L, Campos-Martin Y, R?os Gonzalez JR, Martinez-TorreCuadrada JL, Sanchez-Verde L, Pajares R, Cigudosa JC, Martin MC and Piris MA. Identification of MNDA as a new marker for nodal marginal zone lymphoma. Leukemia 2009 23, 1847–1857.

Maestre L, Tooze R, Cañamero M, Montes-Moreno S, Ramos R, Doody G, Boll M, Barrans S, Baena S, Piris MA and Roncador G. Expression pattern of XBP1(S) in human B-cell lymphomas. Haematologica. 2009 March; 94(3): 419–422.

Montes-Moreno S, Roncador G, Maestre L, Martínez N, Sánchez-Verde L, Camacho FI, Cannata J, Martínez-TorreCuadrada JL, Shen Y, Chan W and Piris MA. Gcet1 (centerin), a highly restricted marker for a subset of germinal center-derived lymphomas. Blood. 2008 111: 351-358.

Garcia JF, Roncador G, Garcia JF, Sanz AI, Maestre L, Lucas E, Montes-Moreno S, Fernandez Victoria R, Martinez-TorreCuadrada JL, Marafioti T, Mason DY, Piris MA. PRDM1/BLIMP-1 expression in multiple B and T-cell lymphoma. Haematologica. 2006. Apr; 91(4):46.

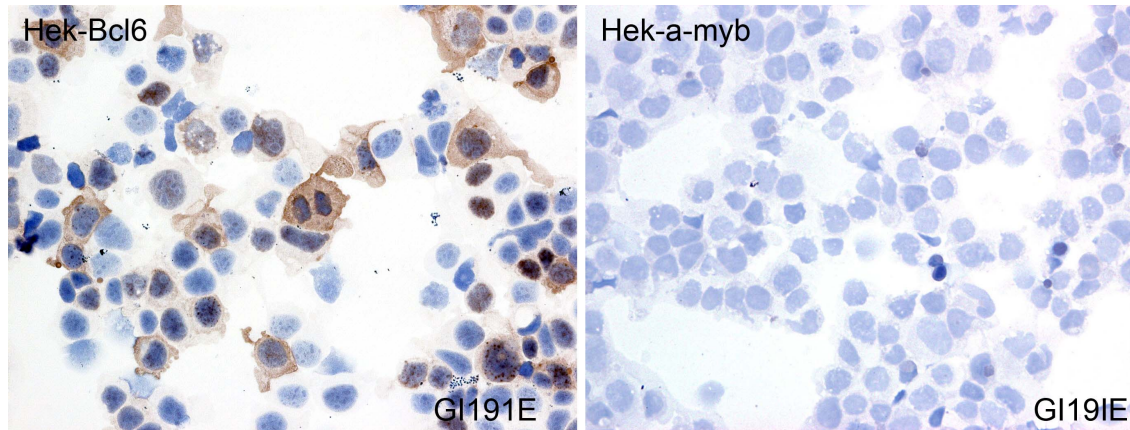
García JF, García JF, Maestre L, Lucas E, Sánchez-Verde L, Romero-Chala S, Piris MA, Roncador G. Genetic Immunization: a New Monoclonal Antibody for the Detection of BCL-6 Protein in Paraffin Sections. J Histochem Cytochem. 2006 54(1):31-8.

## APPLICATIONS

IHC Techniques	Clone	Dilution	Antibody concentration	Antigen retrieval method	Visualization kit	Positive control	Negative control	Protein localization	Positivity in other species
Frozen tissue and cytopspins									

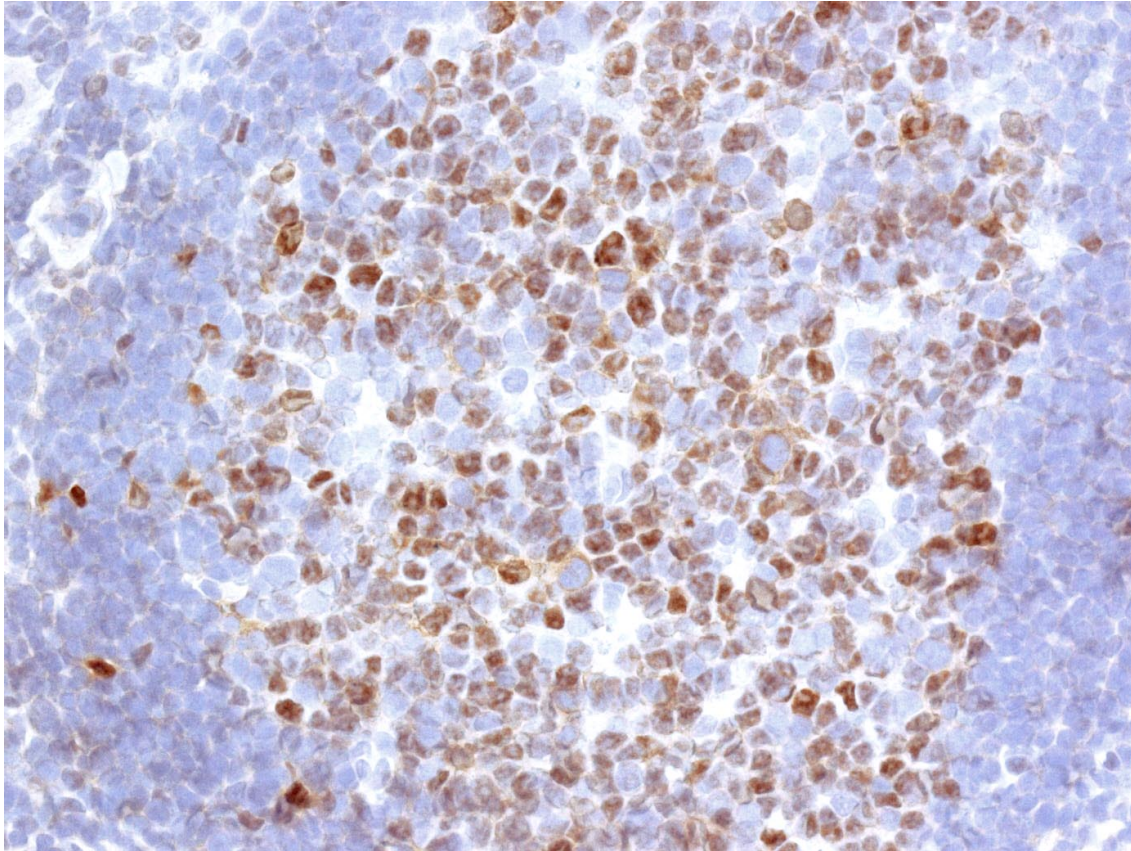
## Monoclonal Antibodies Catalogue

Recommended	GI191 E	1:100	supernatant	None	goat anti mouse DAKO	Tonsil		nuclear	
<b>Paraffin tissue</b>									
Recommended	GI191 E	1:350	supernatant	20 min R2 (Tris-EDTA)	Novolink kit	Tonsil		nuclear	mouse
<b>Immunofluorescence</b>									



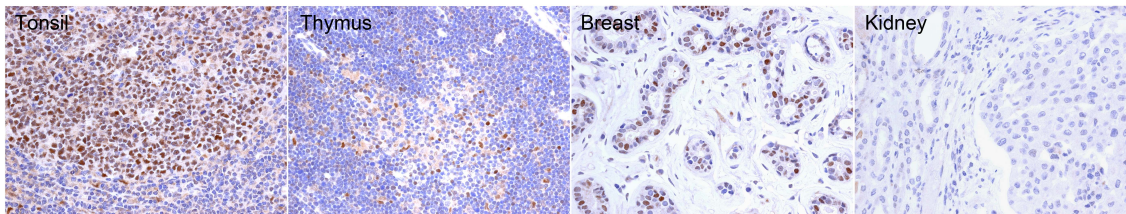
### GI191EmAb in transfected cells

Nuclear and cytoplasmic staining on frozen cytospin preparations of transfected HEK293T/BCL6 cells using antibody GI191E. HEK-a-myb transfected cells were used as negative control.



**GI191E mAb in frozen tonsil section**

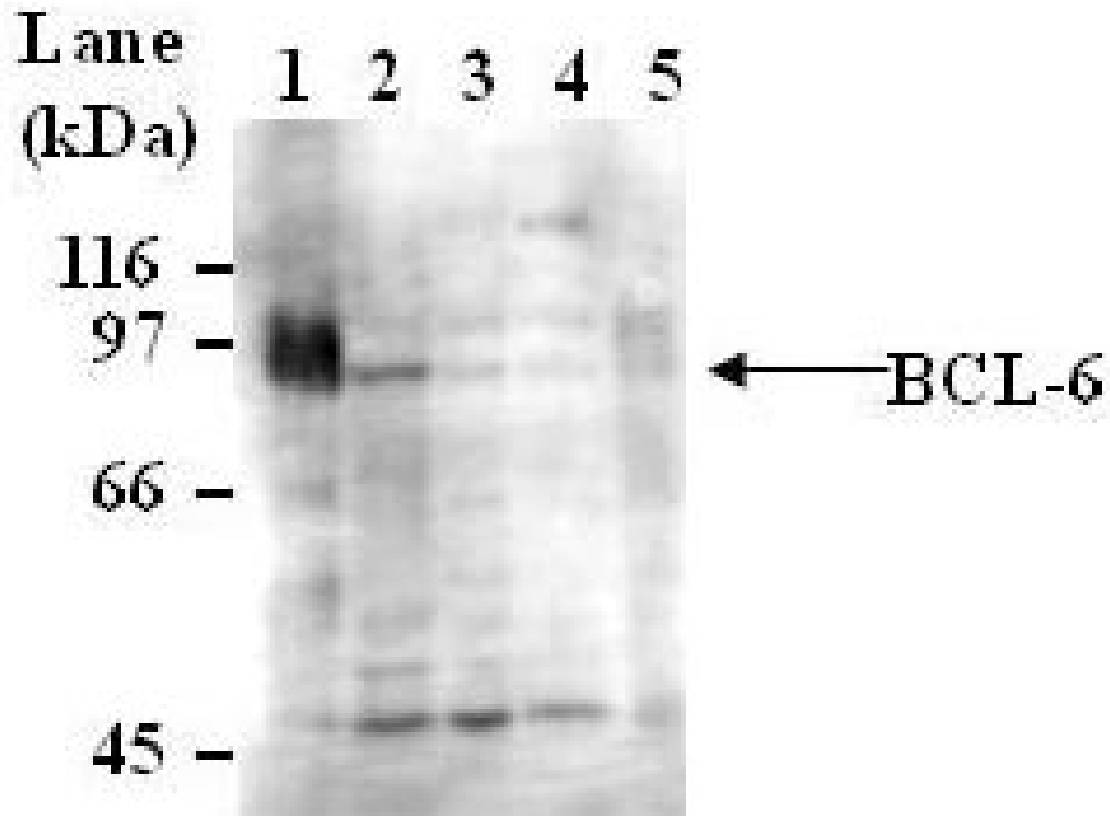
In tonsil, BCL6 protein is strongly expressed by germinal center B cells



**GI191E staining in human paraffin sections.**

In tonsil, BCL6 protein is strongly expressed by germinal center B cells. Testicle section was used as a negative control.

WB Techniques	Clone	Dilution	Antibody concentration	Positive control	Negative control	Expected MW	Observed Mw	Positivity in other species
<b>Western Blotting</b>								
Recommended	GI191E	supernatant	1:20	Raji cell line		78kDa	80kDa	
<b>Immunoprecipitation</b>								



**Western Blotting of BCL6 (GI191E) using different human cell lines.**

Lane 1 Raji cell line (50ug) (+)

Lane 2 U937 cell line (50ug) (+)

Lane 3 HL-60 cell line (50ug) (+)

Lane 4 k562 cell line (42ug) (+)

Lane 5 HeLa cell line (50ug) (+)