

# TRF1

**CONTACT INFORMATION:** Monoclonal Antibodies Unit. Centro Nacional de Investigaciones Oncológicas  
**STATUS:** Validated  
**TYPE:** rat anti mouse  
**CLONE NAME:** 572C  
**PROTEIN:** Mus musculus Telomeric repeat binding protein 1  
**PROTEIN WEB:** <http://www.uniprot.org/uniprot/P70371>  
**ANTIGEN USED:** mTRF1-His  
**FUSION PARTNER:** NS1/Ag4-1 (NS1) cells  
**ISOTYPE:** IgG2a  
**SPECIES REACTIVITY:** mouse  
**PREPARATION AND STORAGE:** Aliquot and store at 4C. Do not freeze

## DESCRIPTION

Binds the telomeric double-stranded 5'-TTAGGG-3' repeat and negatively regulates telomere length. Involved in the regulation of the mitotic spindle. Component of the shelterin complex (telosome) that is involved in the regulation of telomere length and protection. Shelterin associates with arrays of double-stranded 5'-TTAGGG-3' repeats added by telomerase and protects chromosome ends; without its protective activity, telomeres are no longer hidden from the DNA damage surveillance and chromosome ends are inappropriately processed by DNA repair pathways.

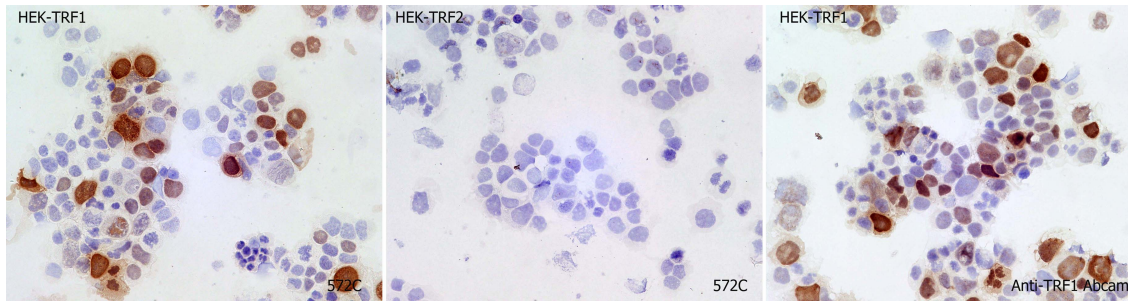
## APPLICATIONS

IHC Techniques	Clone	Dilution	Antibody concentration	Antigen retrieval method	Visualization kit	Positive control	Negative control	Protein localization	Positivity in other species
<b>Frozen tissue and cytopins</b>									
Recommended	572C	Undiluted supernatant	Supernatant					nuclear	

Paraffin tissue

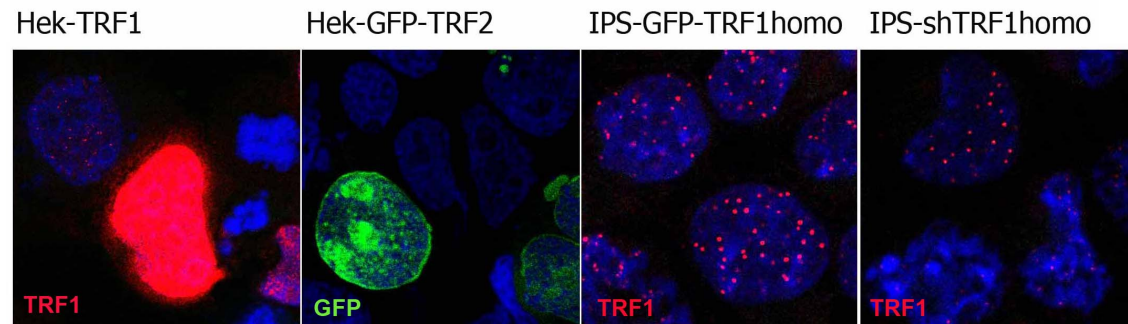
Immunofluorescence

Recommended	572C	Undiluted supernatant	Supernatant					nuclear	
-------------	------	-----------------------	-------------	--	--	--	--	---------	--



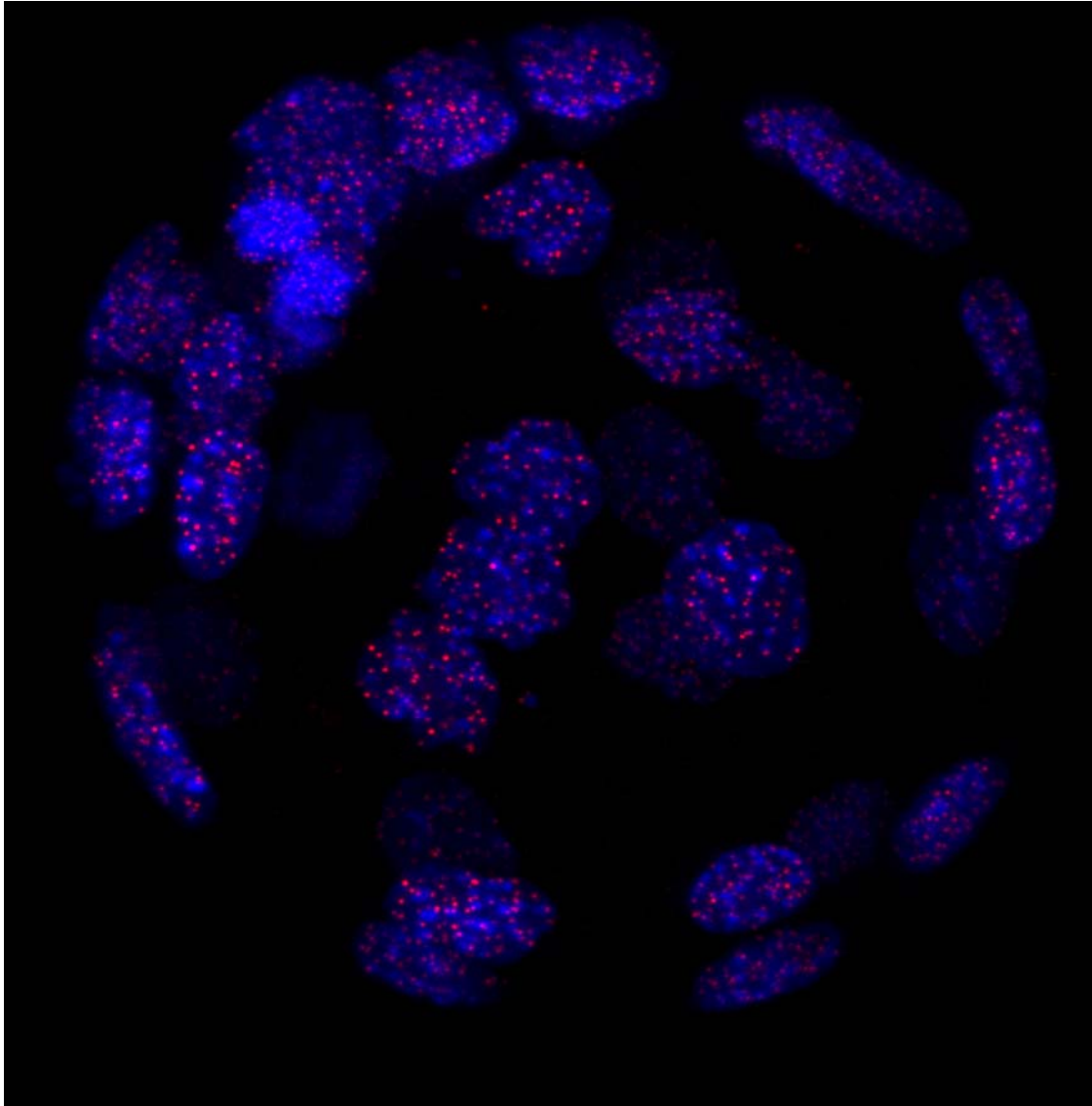
**Anti-TRF1 antibody (572C) in transfected cells.**

To confirm that 572C mAb recognized mouse TRF1 protein, immunohistochemistry on frozen cytopins preparations of mTRF1 expressed in Hek293T was performed. Hek293T-mTRF2-GFP was used as negative control. Anti-TRF1 Abcam antibody was used as positive control.



**572C mAb is able to detect mouse TRF1 protein by immunofluorescence.**

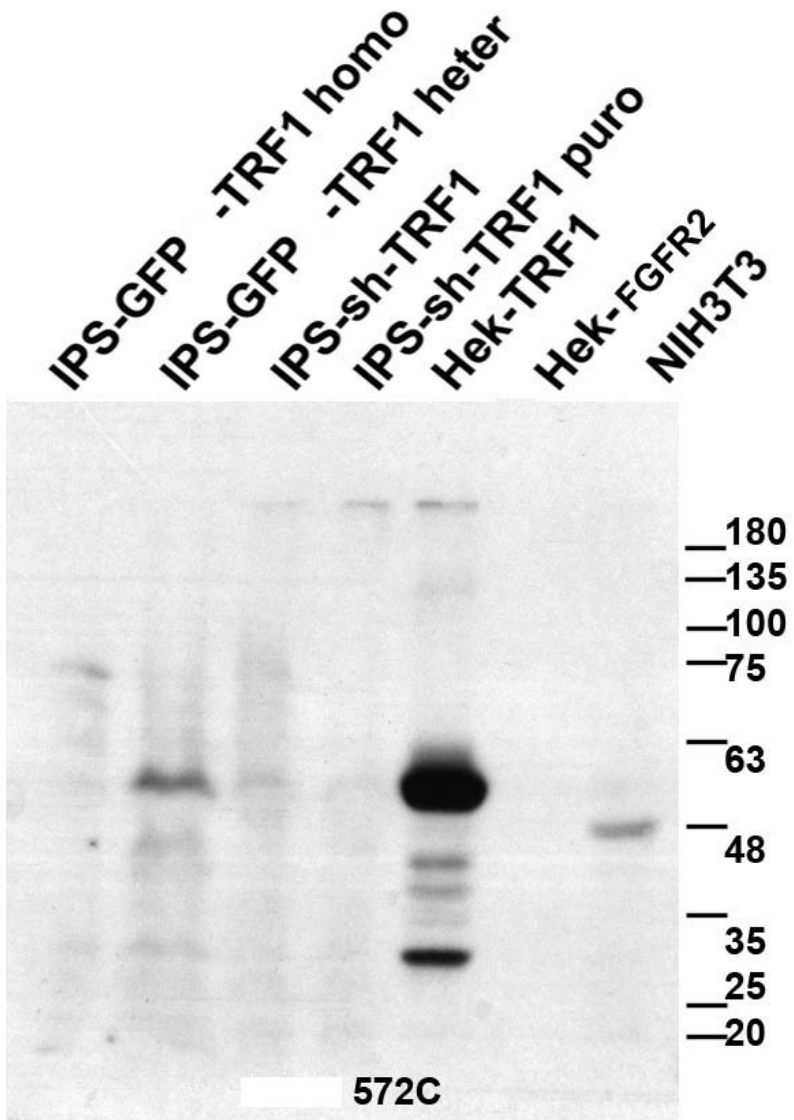
mTRF1- red  
GFP - green  
nuclei - blue



**572C mAb is able to detect mouse TRF1 protein in a mouse blastocyste.**

## Monoclonal Antibodies Catalogue

WB Techniques	Clone	Dilution	Antibody concentration	Positive control	Negative control	Expected MW	Observed Mw	Positivity in other species
<b>Western Blotting</b>								
Recommended	572C	Undiluted supernatant	Supernatant			47kDa	50kDa	
<b>Immunoprecipitation</b>								



572C mAb is able to detect mouse TRF1 protein by WB

Lanes:

Lane 1 IPS-GFP-mTRF1 homo (100ug) (+)

Lane 2 IPS-GFP-mTRF1 heter (100ug) (+/-)

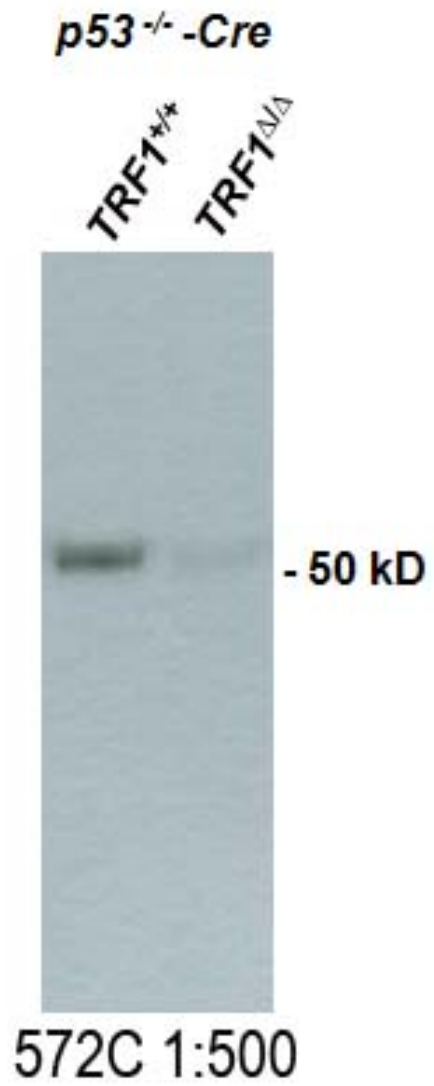
Lane 3 IPS-sh mTRF1 (100ug) (-)

Lane 4 IPS-sh mTRF1 puro (100ug) (-)

Lane 5 Hek-mTRF1 (20ug) (+)

Lane 6 Hek-FGFR2 (20ug) (-)

Lane 7 NIH-3T3 (100ug) (+)



**572C mAb is able to detect mouse TRF1 protein by WB.**

Lanes:



Lane 1 Mefs TRF1 +/- nuclear extract (30ug) (+)

Lane 2 Mefs TRF1 KO nuclear extract (30ug) (-)

Image kindly provided by Ianire Garrobo