

IgD

CONTACT INFORMATION: University of Oxford marketed by Ximbio.com
TYPE: mouse anti human
CLONE NAME: IgD26
PROTEIN: Immunoglobulin D (IgD)
ANTIGEN USED: IgD purified from human myeloma serum
FUSION PARTNER: P3/NS1/1-Ag4.1
ISOTYPE: IgG1
SPECIES REACTIVITY: Human
PREPARATION AND STORAGE: Aliquot and store at 4C. Do not freeze
COMMERCIALIZED BY: Ximbio.com

DESCRIPTION

IgD26 may be used as a primary or secondary antibody.

REFERENCES

J Immunol Methods. 1982;50(2):145-60.

The value of immunohistological screening in the production of monoclonal antibodies.

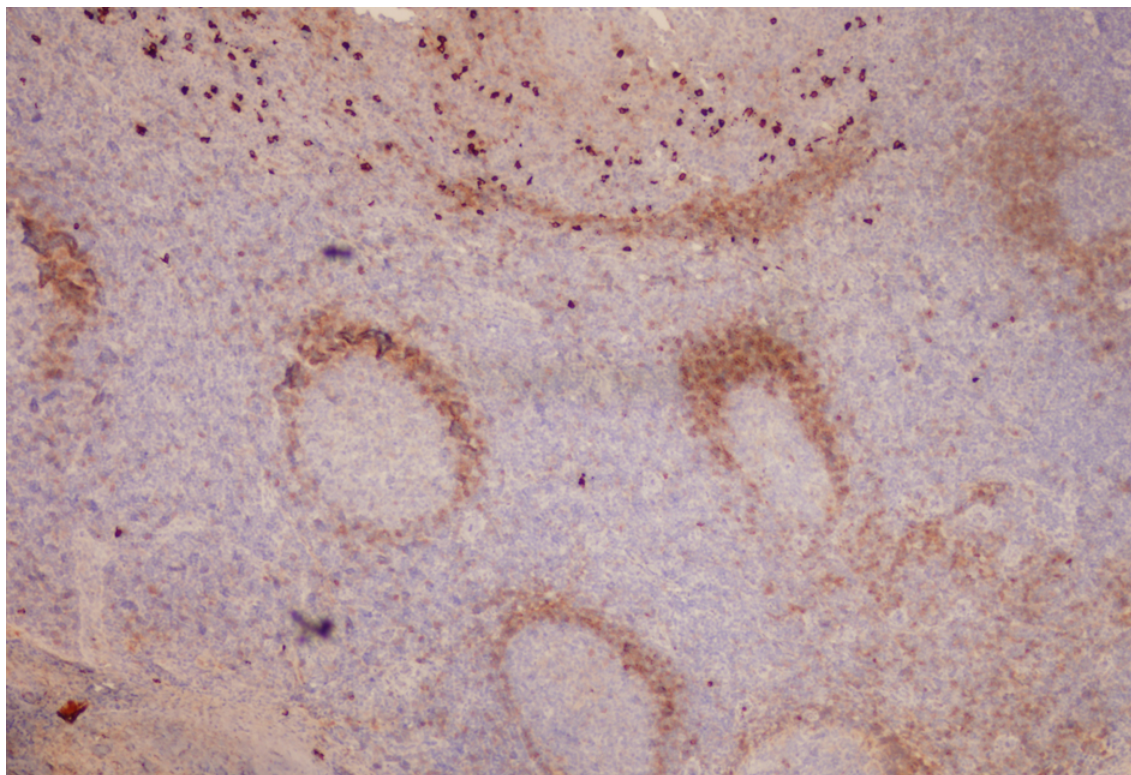
Naiem M, Gerdes J, Abdulaziz Z, Sunderland CA, Allington MJ, Stein H, Mason DY.

PMID: 6806388

APPLICATIONS

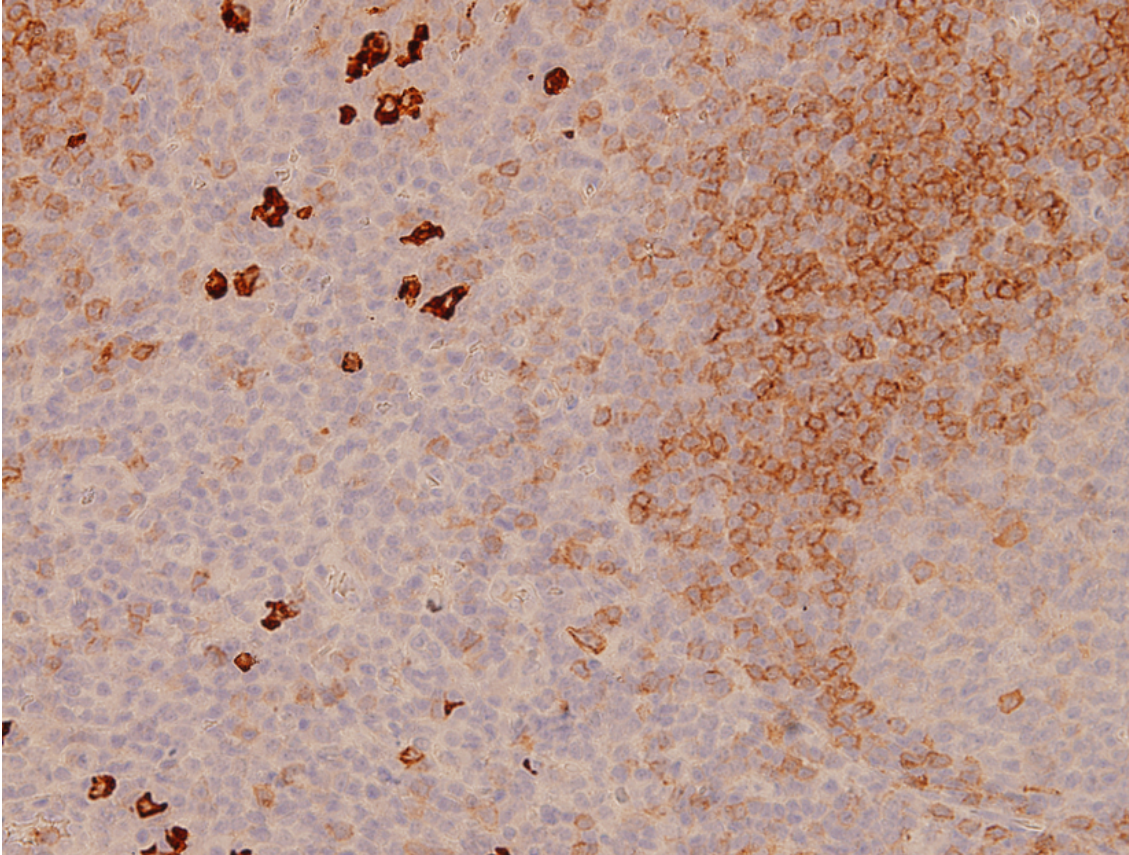
IHC Techniques	Clone	Dilution	Antibody concentration	Antigen retrieval method	Visualization kit	Positive control	Negative control	Protein localization	Positivity in other species
Frozen tissue and cytopspins									
Paraffin tissue									

	IgD26	neat	supernatant	Citrate	Dako Envision	Tonsil			
Immunofluorescence									



IgD26 Tonsil

Tonsil stained with neat supernatant from IgD26 hybridoma, detection using Dako Envision kit, 4x power image



IgD26 Tonsil

Tonsil stained with neat supernatant from IgD26 hybridoma, detection using Dako Envision kit, 20x power image