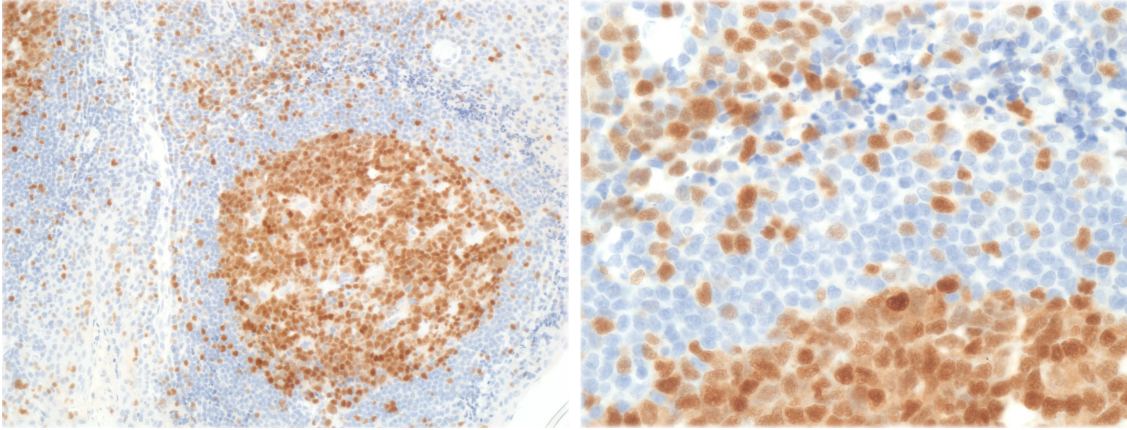


TOX

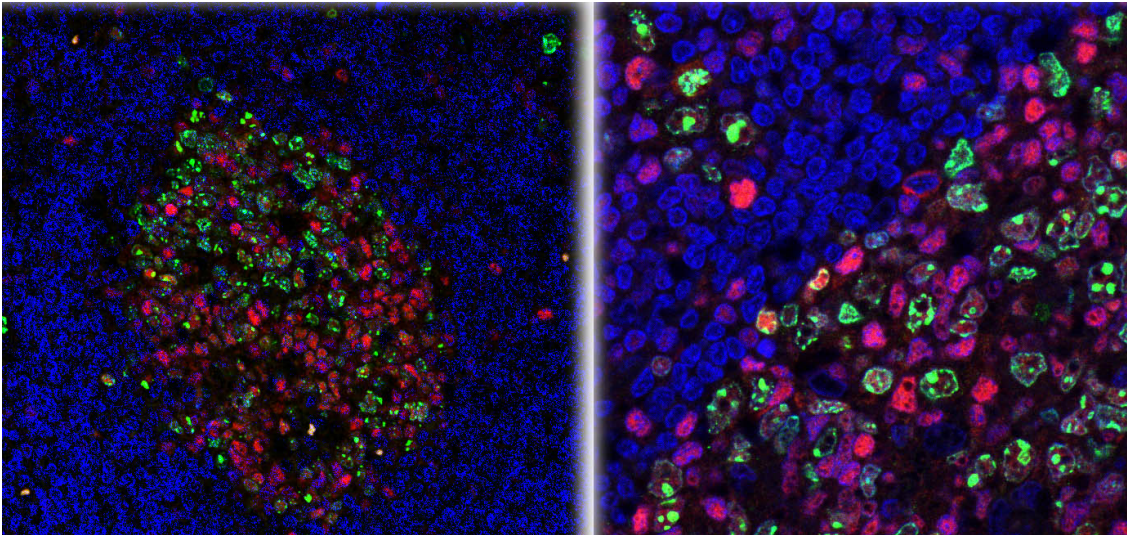
CONTACT INFORMATION: Monoclonal Antibodies Unit. Centro Nacional de Investigaciones Oncológicas
STATUS: Validated
TYPE: Rat anti human
CLONE NAME: NAN448B
PROTEIN: Thymocyte selection-associated high mobility group box protein (TOX)
PROTEIN WEB: <https://www.uniprot.org/uniprot/O94900>
ANTIGEN USED: His-TOX (1-250aa) recombinant protein
FUSION PARTNER: NS1/Ag4-1 (NS1) cells
ISOTYPE: IgG1
SPECIES REACTIVITY: human and mouse
PREPARATION AND STORAGE: Aliquot and store at 4C. Do not freeze

APPLICATIONS

IHC Techniques	Clone	Dilution	Antibody concentration	Antigen retrieval method	Visualization kit	Positive control	Negative control	Protein localization	Positivity in other species
Frozen tissue and cytopspins									
Recommended	NAN4 48	Neat	Supernatant					nuclear	
Paraffin tissue									
Recommended	NAN4 48	1:60	Supernatant		Leica	Tonsil		nuclear	
Immunofluorescence									
Recommended	NAN4 48	1:50	Supernatant	Tris-EDTA		Tonsil		nuclear	



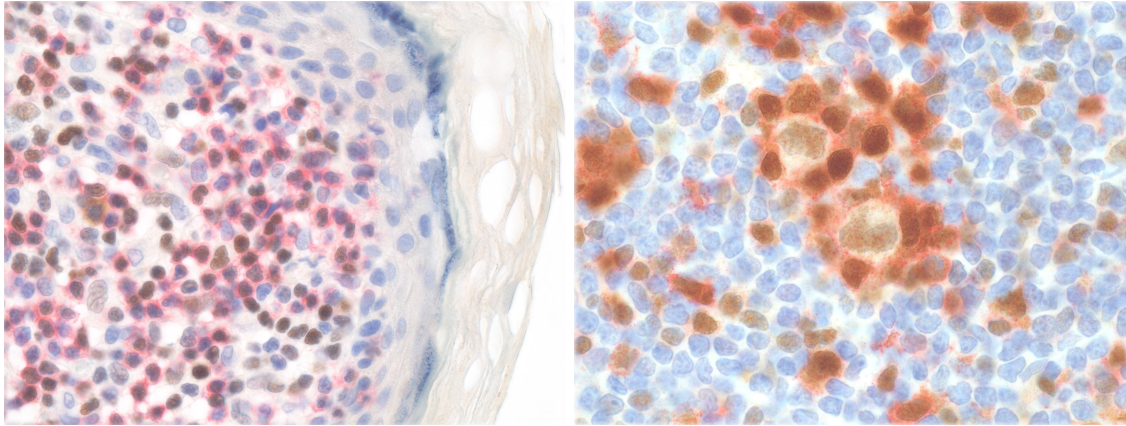
TOX expression in paraffin tonsil section



TOX/Ki67 double immunofluorescence in paraffin tonsil

TOX in red

Ki67 in green



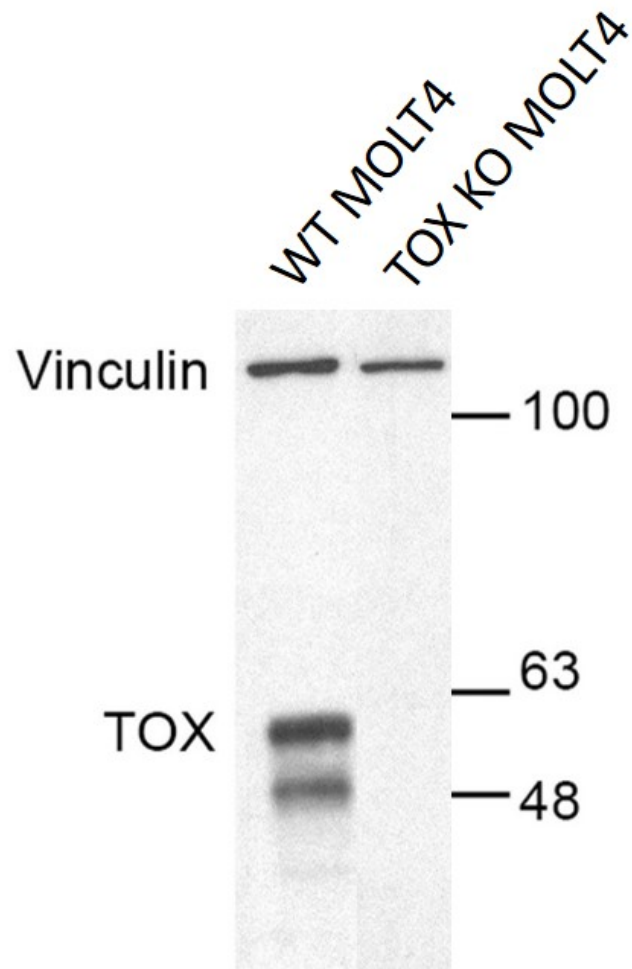
TOX/CD8 double immunohistochemistry in Mycosis Fungoides and TOX/PD1 in NLPHL

TOX brown

CD8 red

PD1 red

WB Techniques	Clone	Dilution	Antibody concentration	Positive control	Negative control	Expected MW	Observed Mw	Positivity in other species
Western Blotting								
Recommended	NAN448	Neat	supernatant			57kDa	57kDa	
Immunoprecipitation								



NAN448 in WT and KO MOLT4 cell line