

EED

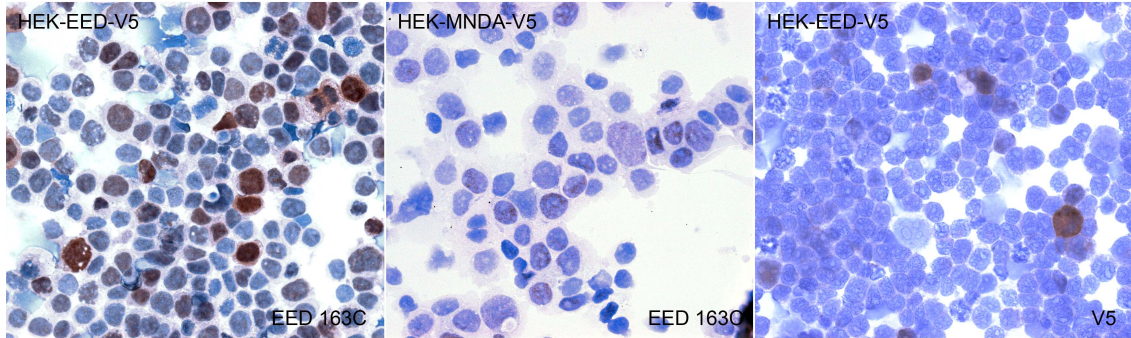
CONTACT INFORMATION:	Monoclonal Antibodies Unit. Centro Nacional de Investigaciones Oncológicas
STATUS:	Validated
TYPE:	mouse anti human
CLONE NAME:	163C
PROTEIN:	Human full length EED (Embryonic ectoderm development)
PROTEIN WEB:	http://www.hprd.org/alternate?hprd_id=09343&isoform_id=09343_1&isoform_name=Isoform_1
ANTIGEN USED:	His-EED full length protein
FUSION PARTNER:	myeloma p3-NS1/Ag4-1 (NS1) cell
ISOTYPE:	IgG2a
SPECIES REACTIVITY:	human and mouse
PREPARATION AND STORAGE:	Aliquot and store at 4C. Do not freeze
COMMERCIALIZED BY:	Active Motif

DESCRIPTION

This gene encodes a member of the Polycomb-group (PcG) family. PcG family members form multimeric protein complexes, which are involved in maintaining the transcriptional repressive state of genes over successive cell generations.

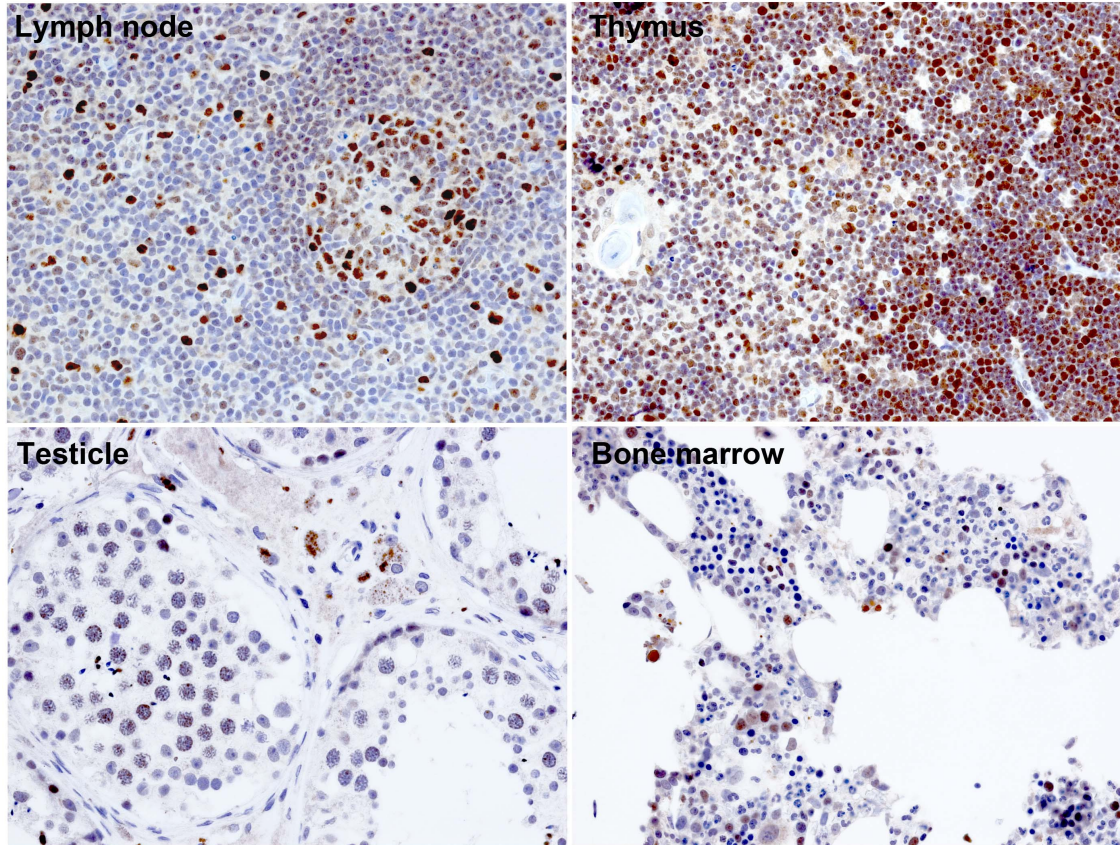
APPLICATIONS

IHC Techniques	Clone	Dilution	Antibody concentration	Antigen retrieval method	Visualization kit	Positive control	Negative control	Protein localization	Positivity in other species
Frozen tissue and cytopspins									
Paraffin tissue									
Recommended	163C	1:600	Supernatant	Tris-EDTA	Novolink	Tonsil		Nuclear	Mouse
Immunofluorescence									
Recommended	163C	1:40	Supernatant	Tris-EDTA	Alexa 488	Tonsil		Nuclear	



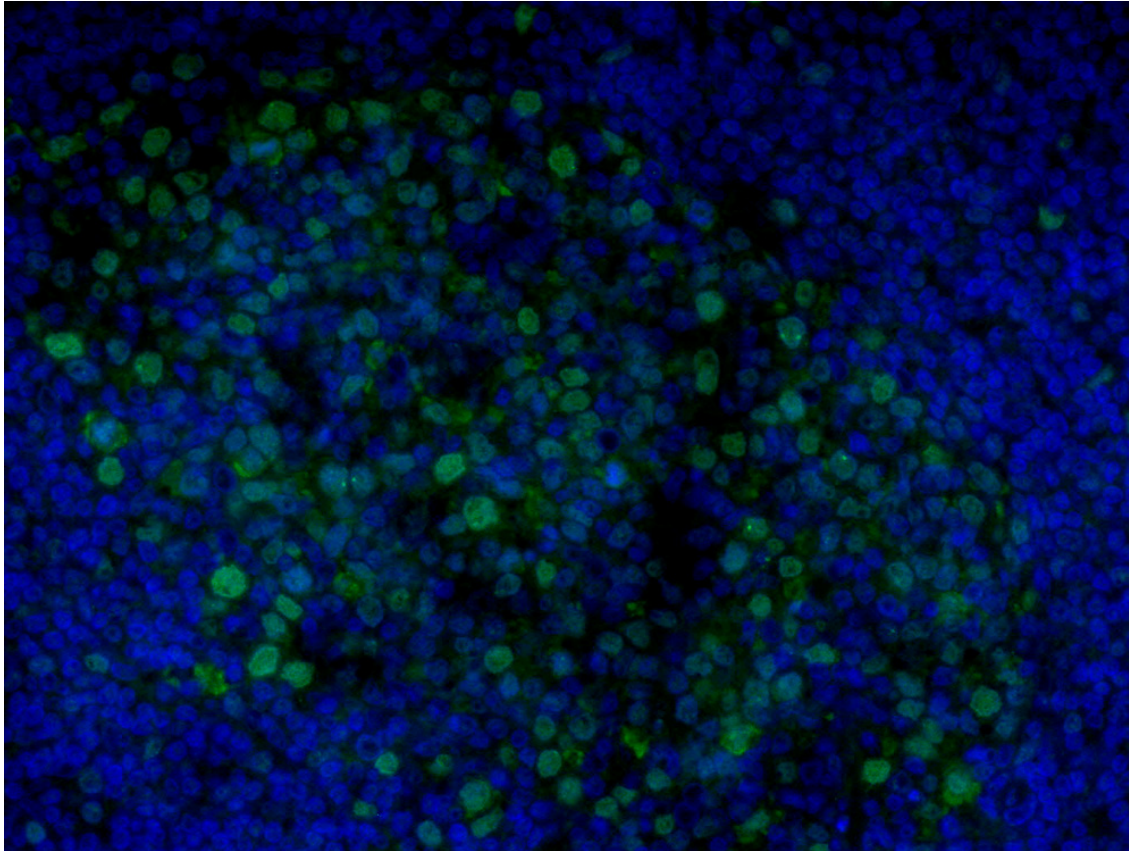
EED antibody (163C) in transfected cells.

Validation of EED 163C mAb in HEK293T-EED transfected cells. Hek-MNDA transfected cells was used as negative control. Anti-v5 was used as positive control.



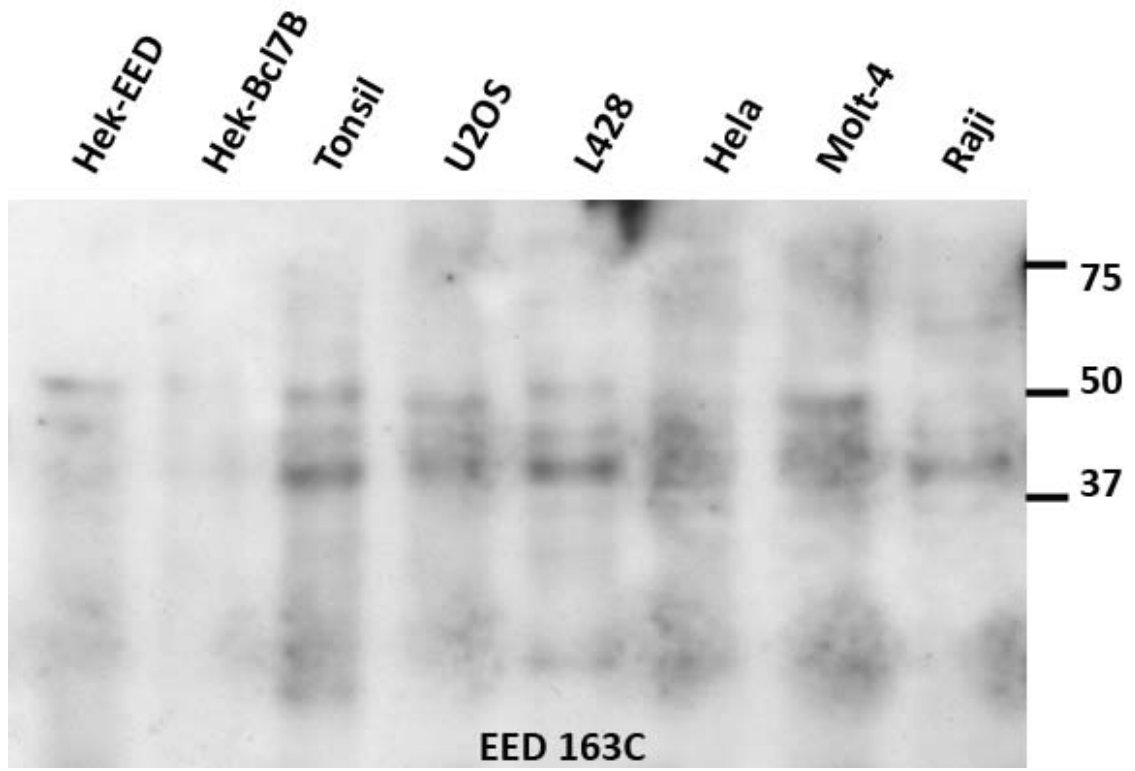
EED (163C) expression in human paraffin sections.

In Human lymph node, thymus, testicle and bone marrow EED protein is expressed in the nucleus.



EED (163C) immunofluorescence in human tonsil.

WB Techniques	Clone	Dilution	Antibody concentration	Positive control	Negative control	Expected MW	Observed Mw	Positivity in other species
Western Blotting								
Not recommended	163C	undiluted	supernatant			50kDa		
Immunoprecipitation								



Anti-EED (163C) antibody in Western Blott

Lane 1 Hek-EED (200ug)

Lane 2 Hek-Bcl7B (200ug)

Lane 3 Tonsil (200ug)

Lane 4 U2OS (200ug)

Lane 5 L428 (200ug)

Lane 6 Hela (200ug)

Lane 7 Molt-4 (200ug)

Lane 8 Raji (200ug)